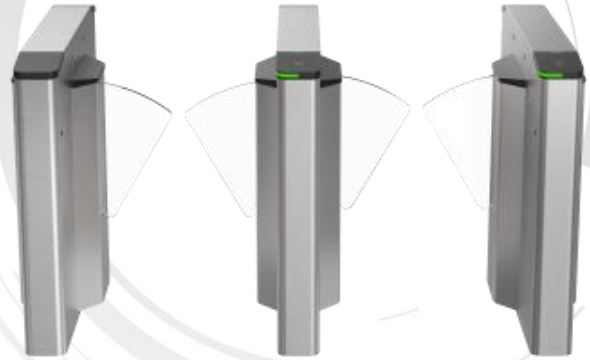


**DS-K3Y220X
Flap Barrier**

The DS-K3Y220X series swing barrier with 4 pairs of IR lights is designed to detect unauthorized entrance or exit. By adopting the flap barrier integratedly with the access control system, person should authenticate to pass through the lane via presenting IC or ID card, scanning QR code, etc. It is widely used in factories, construction sites, residences, etc.

- 4 pairs of IR light detectors: Permissions validation and anti-tailgating.
- LED light indicates passing direction.
- Valid passing duration settings: System will cancel the passing permission if a person does not pass through the lane within the valid passing duration.
- Door remaining open when fire alarm triggered: The door wings will be free status.
- Built-in access control board and card readers.
- Support speaker and remote control keyfob optional, need to order separately.

▪ Specification

| System | |
|----------------------------|---|
| Motor | Brushless motor |
| MCBF | ≥ 3 million |
| Interface | |
| Network interface | 10M/100M x 1 |
| Lock control | 2 |
| Exit button | 2 |
| Alarm input | 2 |
| Alarm output | 2 |
| Capacity | |
| Card capacity | 200,000 |
| Event capacity | 250,000 |
| Authentication | |
| Card type | EM card, Mifare 1 card |
| General | |
| Throughput | 20 to 60 persons per minute The actual throughput is affected by the person passing rate and passing method. |
| IR light detectors | 4 pairs |
| Lane width | 550 mm (18.15") |
| Barrier material | Acrylic glass |
| Pedestal material | SUS304 stainless steel |
| Built-in access controller | Yes |
| Power supply | 100 to 240 VAC; 50 to 60 Hz |
| Working temperature | -30 °C to 65 °C (-22 °F to 149 °F) |
| Power consumption | 75 W (stand by) |
| Working humidity | 10% to 95% (No Condensing) |
| Dimensions | With packaging: 1300 mm (51.2") × 245 mm (9.65") × 1100 mm (43.3") ; Without packaging: 1205 mm (47.44") × 146 mm (5.75") × 1000 mm (39.37"); |
| Weight | (Net) Left: 32.15 kg (70.9 lbs); Middle: 40.27 kg (88.8 lbs); Right: 31.58 kg (69.2 lbs); (Rough) Left: 51.15 kg (112.8 lbs); Middle: 58.27 kg (128.5 lbs); Right: 39.85 kg (111.5 lbs); |
| Application environment | Indoor and outdoor |

▪ Maintenance

The main element of the turnstile is stainless steel, which is rustless (antioxidant) and corrosion resistant (The anti corrosion ability in the medium of acid, alkali, and salt). In order to keep the stainless steel from being oxidized or corroded, you should clean and care the turnstile surface periodically .

The instructions and tips for maintaining the turnstile are as follows:

- Select different stainless steel types according to the variety of the environments. You can select 304 stainless steel for common circumstances and 316 stainless steel for the scenarios of seashores and chemical plants.
- Keep the device surface clean and dry.
- Use non-woven cloth and ethyl alcohol to clean the dirt on the device surface.
- Use sourcing pad (do not use mesh cleaning ball) to clean the rust on the device surface by following the wire drawing on the stainless steel. And then use non-woven cloth and stainless steel cleaner to wipe the device surface.
- Clean and maintain the device by using non-woven cloth and stainless steel cleaner periodically. It is suggest to clean the device every month in common circumstances and every week for severe environments (seaside and chemical plants for instance).

▪ Available Model

DS-K3Y220X-L1/EPgQ-Dp60, DS-K3Y220X-R/EPgQH-Dp55, DS-K3B220X-M/MPgQ-Dp65, DS-K3B220X-R/MPgQ-Dp65,
DS-K3B220X-L/MPgQ-Dp65, DS-K3Y220LX-L1/Pg-Dp55, DS-K3Y220LX-L1/Dp55, DS-K3Y220X-L1/MPg-Dp55, DS-K3Y220X-L1/EPg-Dp55,
DS-K3Y220LX-L2/Pg-Dp55, DS-K3Y220LX-L2/Dp55, DS-K3Y220X-L2/MPg-Dp55, DS-K3Y220X-L2/EPg-Dp55, DS-K3Y220LX-M1/Pg-Dp55,
DS-K3Y220LX-M1/Dp55, DS-K3Y220X-M1/MPg-Dp55, DS-K3Y220X-M1/EPg-Dp55, DS-K3Y220LX-M2/Pg-Dp55, DS-K3Y220LX-M2/Dp55,
DS-K3Y220X-M2/MPg-Dp55, DS-K3Y220X-M2/EPg-Dp55, DS-K3Y220LX-R/Pg-Dp55, DS-K3Y220LX-R/Dp55, DS-K3Y220X-R/MPg-Dp55,
DS-K3Y220X-R/EPg-Dp55

▪ Dimension