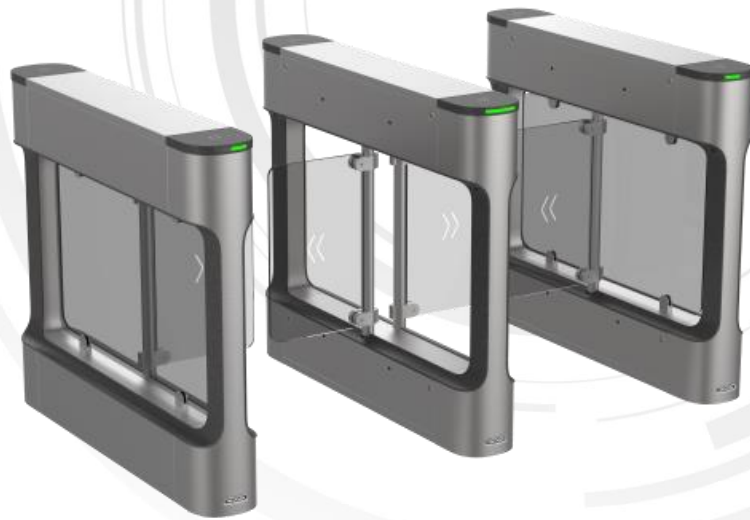


**DS-K3B411BX
Swing Barrier**

The DS-K3B411BX series swing barrier with 6 pairs of IR lights is designed to detect unauthorized entrance or exit. By adopting the swing barrier integratedly with the access control system, person should authenticate to pass through the lane via presenting IC or ID card, scanning QR code, etc. It is widely used in attractions, stadiums, construction sites, residences, etc.

- 6 pairs of IR light detectors: Permissions validation and anti-tailgating
- LED light indicates passing direction
- The barrier will stop working for a period of time when detecting obstruction when open/close barrier
- Self-detection, Self-diagnostics, and automatic alarm
- System will cancel the passing permission if a person does not pass through the lane within the valid passing duration
- Door remaining open when fire alarm triggered: The barrier will open automatically when alarm is triggered.
- Barrier will automatically open when powering down

▪ Specification

System	
MCBF	> 3 million times
Motor	Brushless motor
Interface	
Network interface	1
RS-485	4
RS-232	2
Exit button	2
Lock control	2
Alarm input	1
Alarm output	2
Capacity	
Card capacity	500,000
Event capacity	500,000
General	
Throughput	20 to 60 persons per minute The actual throughput is affected by the person passing rate and passing method.
Power supply method	100 to 240 VAC; 50 to 60 Hz
IR light detectors	6 pairs
Lane width	550 mm to 1100 mm
Working temperature	-20 °C to 65 °C (-4 °F to 149 °F)
Built-in access controller	Yes
Working humidity	10% to 95% (no condensing)
Barrier material	Stainless steel pipe; acrylic glass
Dimensions	Without packaging: 1200 mm × 200 mm × 1020 mm (47.2" × 7.9" × 40.2") With packaging: 1408 mm × 348 mm × 1156 mm (55.4" × 13.7" × 45.5")
Pedestal material	SUS304 stainless steel
Application environment	Indoor and outdoor
Protective level	IPX4 (proved by Hikvision laboratory)
Weight	Net (approximately): 38.3 kg (left), 43.3 kg (middle), 40.2 kg (right)/84.5 lb (left), 95.5 lb (middle), 88.6 lb (right) Rough (approximately): 66.5 kg (left), 71.5 kg (middle), 68.4 kg (right)/146.6 lb (left), 157.7 lb (middle), 150.8 lb (right)
Approval	CE/CB/RoHS/REACH/WEEE
Power consumption	65 W (stand by)

▪ Maintenance

The main element of the turnstile is stainless steel, which is rustless (antioxidant) and corrosion resistant (The anti corrosion ability in the medium of acid, alkali, and salt). In order to keep the stainless steel from being oxidized or corroded, you should clean and care the turnstile surface periodically .

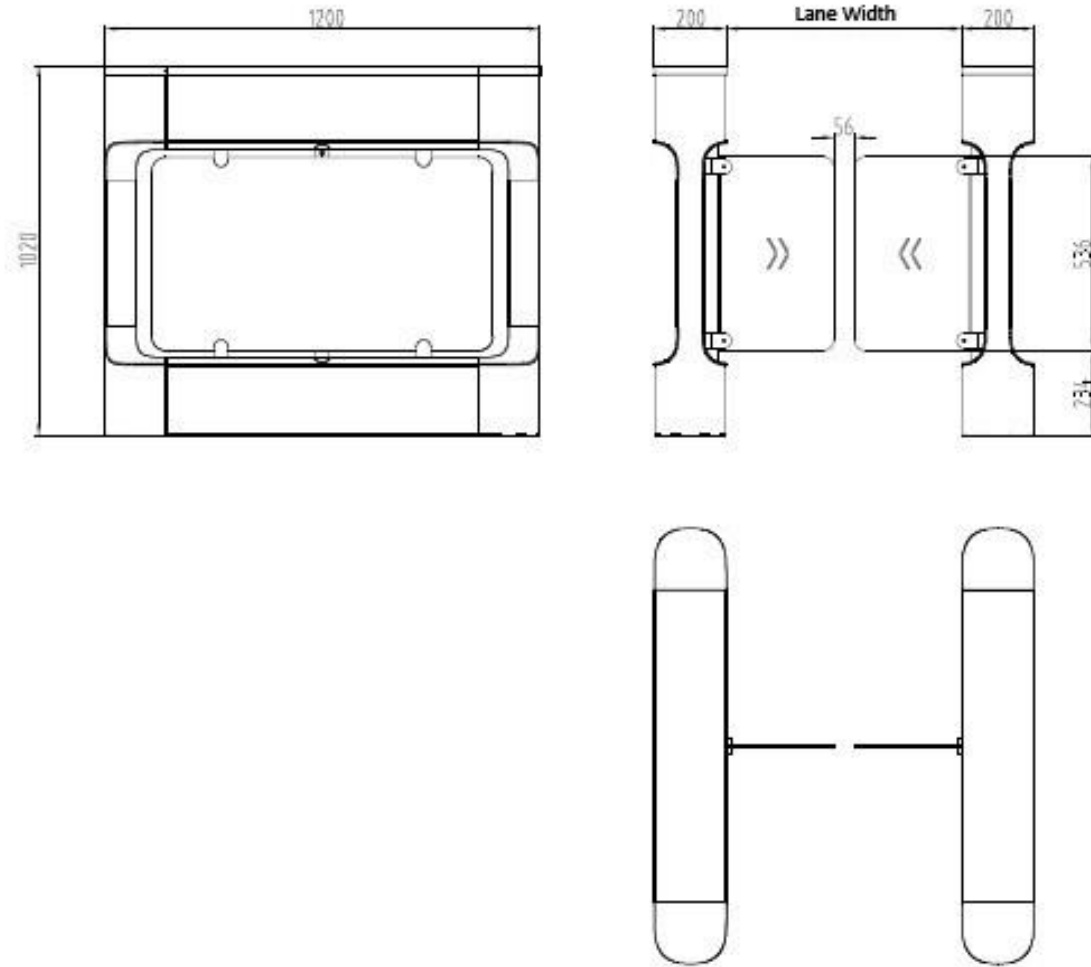
The instructions and tips for maintaining the turnstile are as follows:

- Select different stainless steel types according to the variety of the environments. You can select 304 stainless steel for common circumstances and 316 stainless steel for the scenarios of seashores and chemical plants.
- Keep the device surface clean and dry.
- Use non-woven cloth and ethyl alcohol to clean the dirt on the device surface.
- Use sourcing pad (do not use mesh cleaning ball) to clean the rust on the device surface by following the wire drawing on the stainless steel. And then use non-woven cloth and stainless steel cleaner to wipe the device surface.
- Clean and maintain the device by using non-woven cloth and stainless steel cleaner periodically. It is suggest to clean the device every month in common circumstances and every week for severe environments (seaside and chemical plants for instance).

▪ Available Model

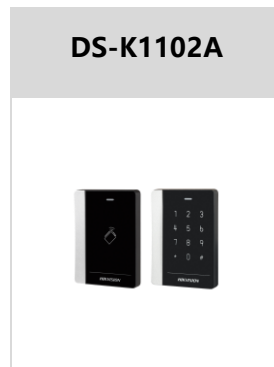
DS-K3B411BX-L/M-Dp65
DS-K3B411BX-M/M-Dp65
DS-K3B411BX-R/M-Dp65
DS-K3B411BX-L/D-Dp65
DS-K3B411BX-L/MPg-Dp65
DS-K3B411BX-L/MPg-Dp90
DS-K3B411BLX-M/Pg-Dp65
DS-K3B411BLX-M/Dp65
DS-K3B411BX-M/D-Dp65
DS-K3B411BX-M/MPg-Dp65-90
DS-K3B411BX-M/MPg-Dp90-65
DS-K3B411BX-M/M-Dp65-868
DS-K3B411BX-R/D-Dp65
DS-K3B411BX-R/MPg-Dp90
DS-K3B411BX-R/MPg-Dp65
DS-K3B411BX-R/M-Dp65-868
DS-K3B411BX-Dp65/2
DS-K3B411BX-Dp70/2
DS-K3B411BX-Dp75/2
DS-K3B411BX-Dp80/2
DS-K3B411BX-Dp85/2
DS-K3B411BX-Dp90/2
DS-K3B411BX-Dp95/2
DS-K3B411BX-Dp100/2
DS-K3B411BX-Dp110/2

▪ **Dimension**



▪ **Accessory**

▪ **Included**



▪ **Optional**

DS-K7R01-433	DS-K7R01-868	DS-K3B411X-BASE
